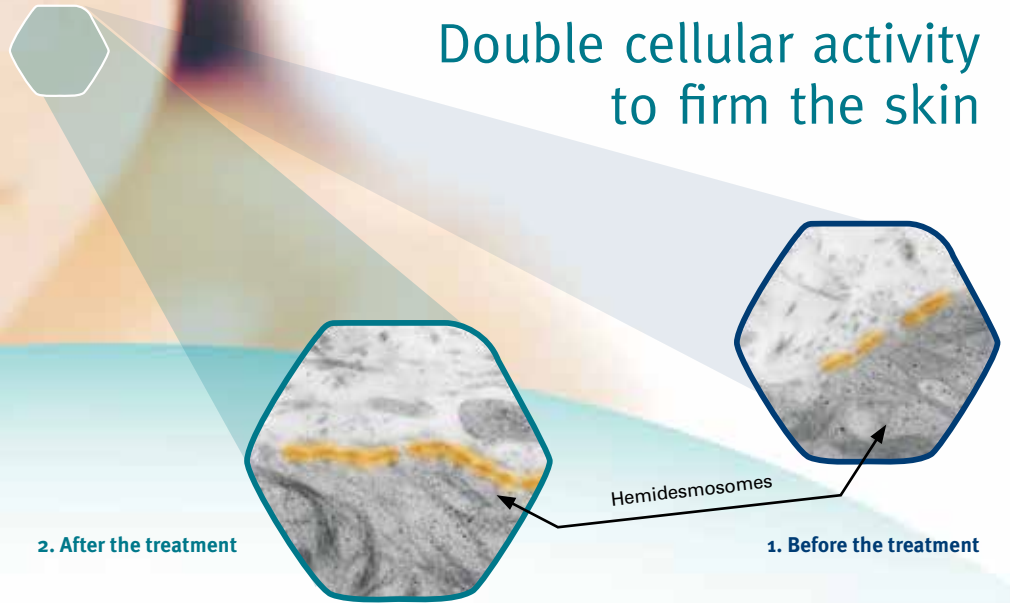


# serilesine<sup>®</sup>

peptide

Double cellular activity  
to firm the skin



305% synthesis  
of laminin-5

19% increased  
cutaneous density

405% expression  
of  $\alpha 6$ -integrin



#### Description

Hexapeptide from an adhesion sequence of laminin, which restores the cutaneous structure.



#### Appearance

Transparent solution containing 0.05% Hexapeptide-10.

#### INCI

Water (Aqua), Glycerin, Hexapeptide-10, Caprylyl Glycol.  
Preservative free.

#### Applications

*serilesine<sup>®</sup> peptide* can be incorporated into cosmetic formulations such as emulsions, gels and serums, where skin restructuring and firming is desired.

**Dosage** 1-10%

#### Solubility

Water soluble.

#### Science

Over the years the adhesion between the epidermal and dermal cells is reduced, which results in the loss of skin elasticity.

*serilesine<sup>®</sup> peptide* is a firming active ingredient that promotes a double-cellular activity on both keratinocytes and fibroblasts. It increases the synthesis of laminin-5,  $\alpha 6$ -integrin and hemidesmosomes, thus strengthening the dermo-epidermal junction.

#### Properties

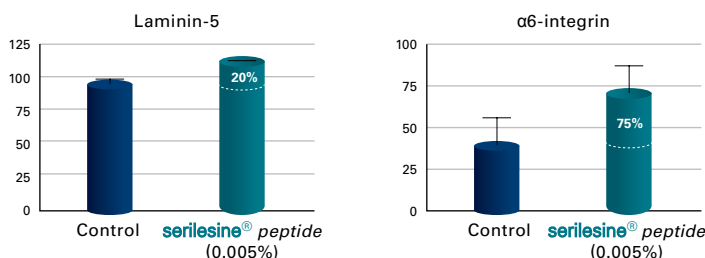
Redensifying and restructuring effect.



## In vitro efficacy

### 1. STIMULATION OF ADHESION PROTEINS PRODUCTION

Efficacy demonstrated on 3D skin models which were treated with 0.005% serilesine<sup>®</sup> peptide.



### 2. STIMULATION OF HEMIDESMOSOME FORMATION

The yellow areas correspond to hemidesmosomes.



### 3. COMPLEMENTARY STUDIES

Keratinocyte proliferation 37.6%.

Fibroblast proliferation 74.6%.



Significant increase of α6-integrin and laminin-5 production



Increment of hemidesmosome number serilesine<sup>®</sup> peptide at 0.005% increased the number of hemidesmosomes, thus enhancing cohesion between dermis and epidermis.

## Ex vivo efficacy

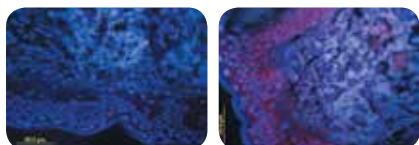
### STIMULATION OF α6-INTEGRIN AND LAMININ-5 PRODUCTION

Laminin-5 and α6-integrin expression was determined by immunohistochemistry. Skin biopsies of three patients were carried out before and after a two-month treatment with a cream containing 10% serilesine<sup>®</sup> peptide solution.



305% synthesis of laminin-5  
405% expression of α6-integrin

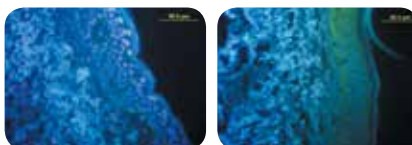
Red immunofluorescent stain for laminin-5



0 months

2 months

Green immunofluorescent stain for α6-integrin



0 months

2 months

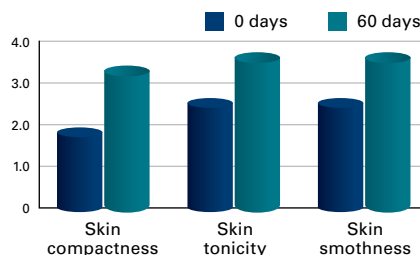
## In vivo efficacy

### 1. EVALUATION OF SKIN APPEARANCE

Panel of 20 female volunteers.

A cream containing 10% serilesine<sup>®</sup> peptide solution was applied twice a day for 60 days.

A dermatologist evaluated several parameters.

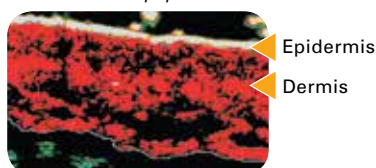


Skin appearance is significantly increased after 60 days  
+40% skin compactness  
+36% skin tonicity  
+45% skin smoothness

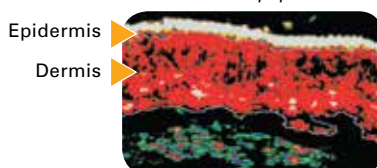
### 2. EVALUATION OF THE DERMIS DENSITY

Panel of 20 female volunteers aged 55 to 64. A placebo cream was applied twice a day on one side of the face and the cream containing 10% serilesine<sup>®</sup> peptide solution on the other, for 54 days.

0 days  
10% serilesine<sup>®</sup> peptide solution



54 days  
10% serilesine<sup>®</sup> peptide solution



19% increased cutaneous density after 54 days